

**Robina Deakin, Tate Liverpool**

***Writing Exhibitions/Exhibiting Literature***

**Creative Europe**

**Smaller Scale Cooperation Project – 3 partners**



Co-funded by the  
Creative Europe Programme  
of the European Union

# Experience of EU funding



2009-2012

## European Regional Development Fund (ERDF)

### *Major Exhibitions Programme Phase 1*

- £998,000 over 4 years, no partners
- Evidence £1,996,000 in expenditure
- New systems set up to provide financial evidence.



2012 - 2014

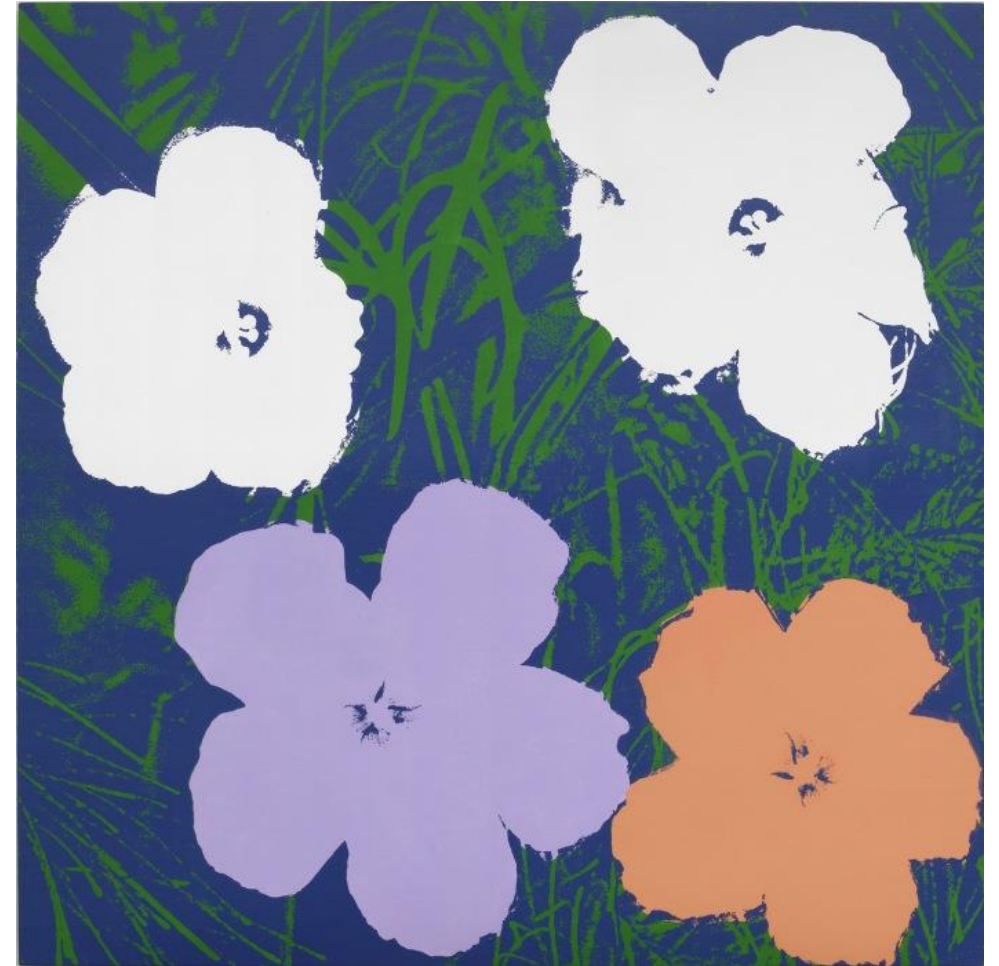
## EACEA Culture Programme 2007-2013

### *Glam! The Performance of Style*

- €200,000 over 2 years, 3 partners (Tate Liverpool, Schirn Kunsthalle Frankfurt, Lentos Kunstmuseum Linz)
- Built on existing systems for providing evidence.

## Problems/Solutions Found

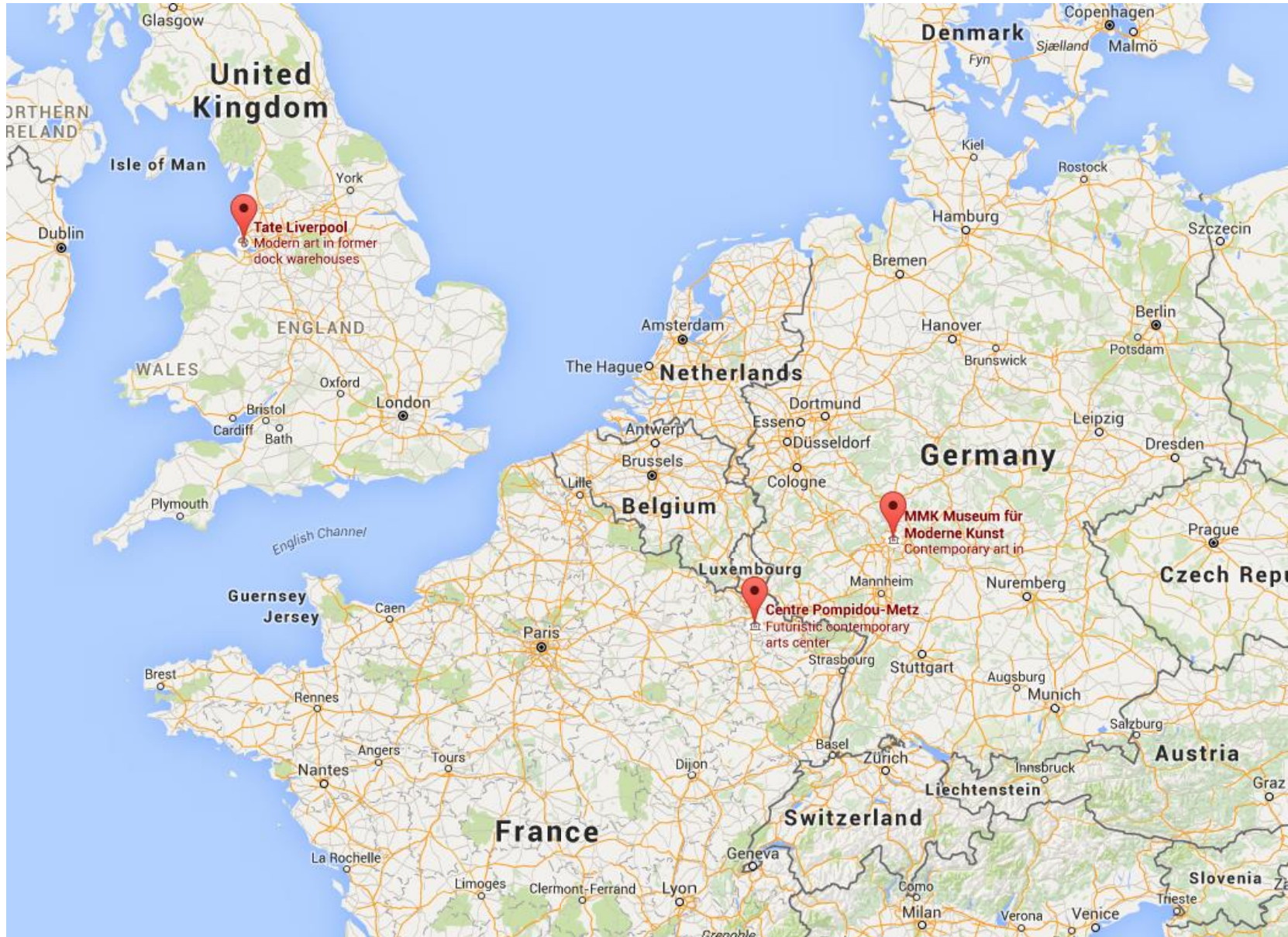
- Providing financial evidence
- Meeting procurement requirements
- Difference in reporting/rules between different funds
- Meeting the estimated budget
- Providing evidence from all partners



Sturtevant, Warhol Flowers 1990, MMK Museum für Moderne Kunst Frankfurt am Main,  
Photo: Axel Schneider © Sturtevant Estate Paris



# Writing Exhibitions/Exhibiting Literature





## Working as a Partner



COLLABORATIVE  
ARTS PARTNERSHIP  
PROGRAMME

Works to know by Heart

# An Imagined Museum

Works from the  
Centre Pompidou, Tate  
and MMK collections

**At Tate Liverpool until 14 February 2016**

Promo code LOVETATE - £5 entry, 10-17pm

***2053: A Living Museum*** 20-21 February 2016,  
Free entry, 10-17pm

**MMK Frankfurt**

24 March – 4 September 2016

**Centre Pompidou-Metz**

21 October 2016 – 27 March 2017

**Make your own Imagined Museum**

<http://www.tate.org.uk/art/albums/list?category=imagined-museum>